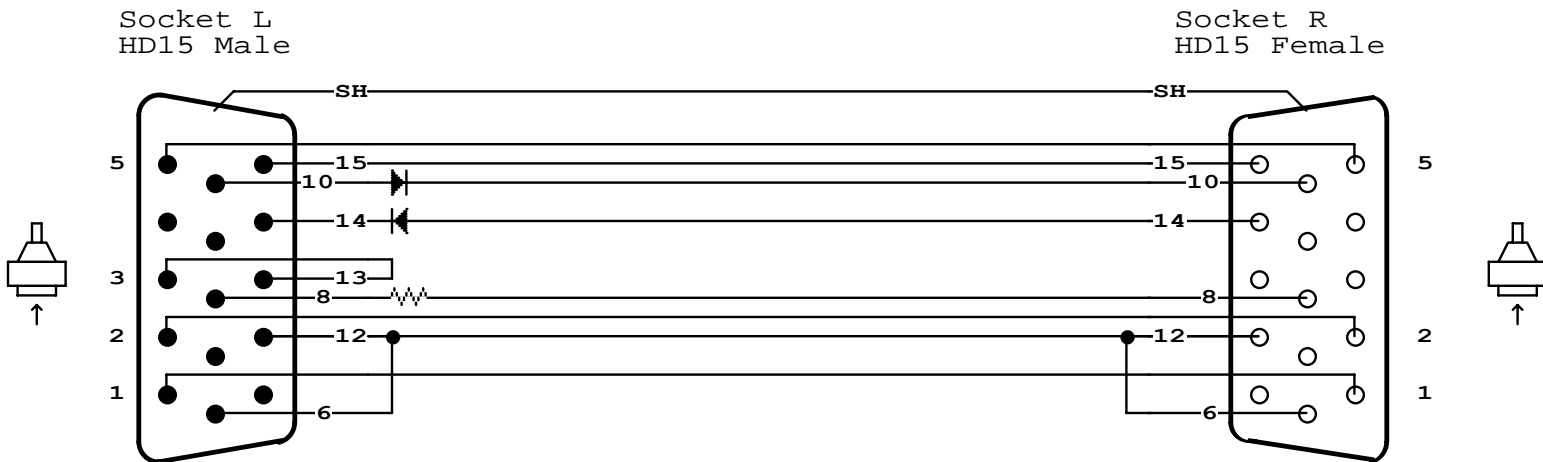


Name: HD15M-HD15F-S9X

HD15 ROTATOR CONTROL CABLE

Operator Name: Chris

Print your company information here. Set up in Preferences / Print Options.



NETLIST

L-SH	R-SH	
L-1	R-1	
L-2	R-2	
L-3	L-13	
L-5	R-5	
L-6	L-12 R-6 R-12	
L-8	R-8	100 Ω
+L-10	-R-10	
-L-14	+R-14	
L-15	R-15	

NOTES

HD15 ROTATOR CONTROL CABLE
 The jumper between Pins 3 and 13 identifies this as Revision 2.1 with a specific application for Model 1210 rudder gear rotator motor. Previous versions connect Pin 3 to pin 4 and are not suitable for Model 1210.

Use AMP Part Number 741312-1 for the Male connector and 741313-1 for the Female. Ensure that resistance thresholds are set for 0.8 ohms conduction and 10 Megohms isolation.

Designer: Edward Fanaton
 Contract: 33101.59

LABEL

HD15 ROTATOR CONTROL CABLE
 Part Number: HD15M-HD15F-S9X